

# LGBTQAI2S+ HOUSING

## POLICY PRESENTATION

Creating Inclusive Housing Solutions  
for the LGBTQAI2S+ Community

Presented by Katie Cox and Johnnie Shaver of the  
LGBTQAI2S+ Housing Collaborative

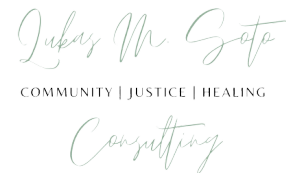




Katie Cox (they/she)  
Executive Director  
The Marie Equi Institute



Johnnie Shaver (he/him)  
Program Manager  
The Marie Equi Institute



# WHAT IS THE LGBTQAI2S+ HOUSING COLLABORATIVE?

We are comprised of LGBTQAI2S+ organizational leaders and representatives, individuals with lived experience, and community organizers.



# WHO HAS BEEN INCLUDED IN THE LGBTQAI2S+ HOUSING COLLABORATIVE SO FAR?

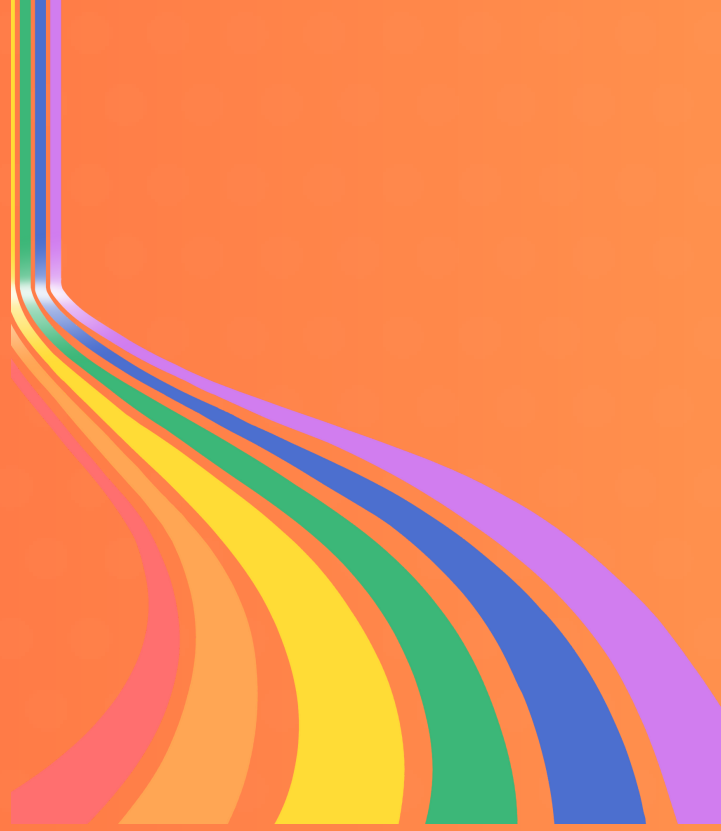
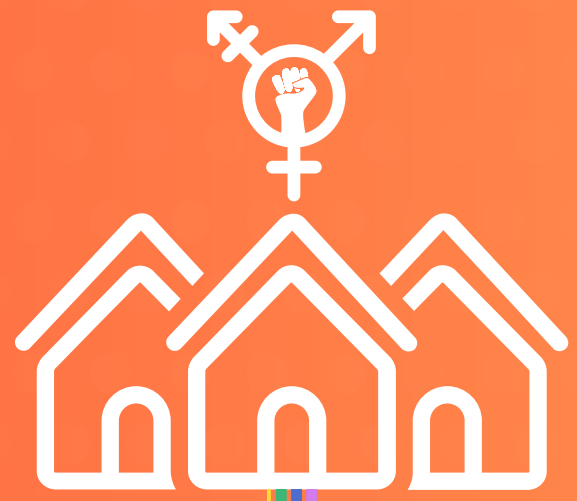


PDX Trans Housing Coalition



**BLACK & BEYOND THE BINARY COLLECTIVE**

*Lukas M. Soto*  
COMMUNITY | JUSTICE | HEALING  
*Consulting*





# WHY WE CHOSE TO WORK TOGETHER

We've come together with the recognition that homelessness is a major issue for our community. Each of us is invested in providing, advocating for, or creating solutions to the struggles that our unhoused/insecurely housed LGBTQAI2S+ siblings are currently facing. We want those solutions to be trauma informed, healing-centered, and culturally-responsive.

We aim to leverage existing resources and work together to create new ones through our collective voice, lived experiences, and organizing power.



# WHAT THE DATA REVEALS

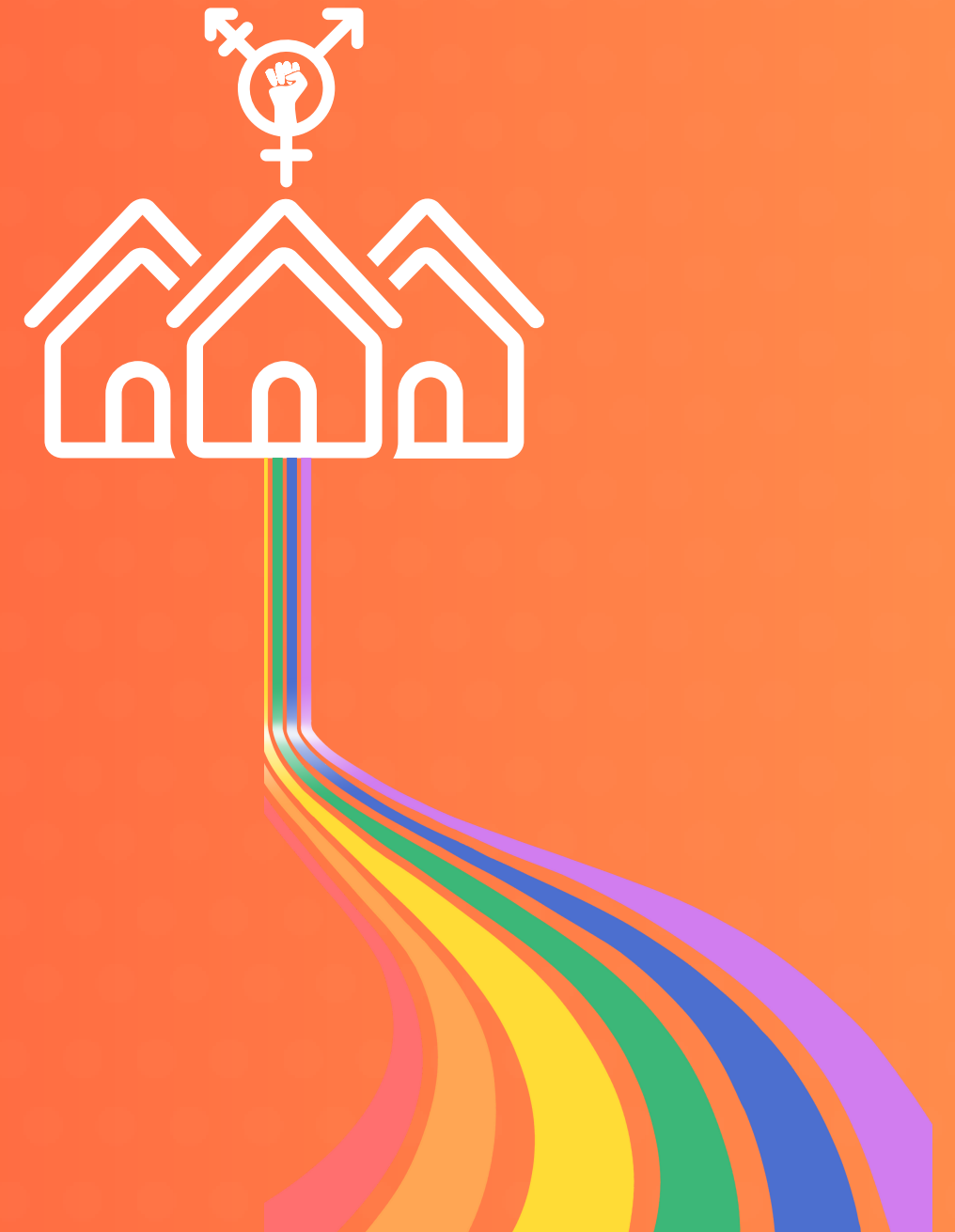
- LGBTQAI2S+ people are more likely to have experienced houselessness.
- Trans people are more likely to have experienced houselessness.



- The number of trans people experiencing houselessness is growing.
- Unhoused trans people interact with the healthcare and criminal legal system with alarming frequency



- Systemic racism and anti-Blackness intersect with and compound LGBTQAI2S+ houselessness.
- Data on houselessness among LGBTQAI2S+ people in the Portland region is incomplete and inadequate.



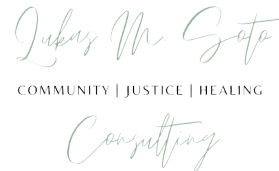


# LOCAL GAPS AND ASSETS

- There are not enough LGBTQAI2S+ culturally specific or responsive houseless services in the Portland region.
- Compared to other areas with large queer communities, Portland does not measure up.



There are no transgender men or women in positions of management or director level roles at any of the organizations that participated in the recent Classification, Compensation, and Benefits study.



- Although non-LGBTQAI2S+ community orgs provide houseless services to LGBTQAI2S+ people, they do so with varying levels of sensitivity and proficiency
- There are more houseless services for LGBTQAI2S+ youth than for adults
- For adults, notable gaps along the houseless-services continuum



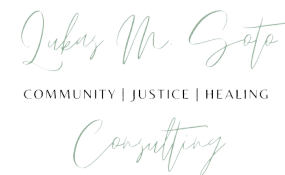
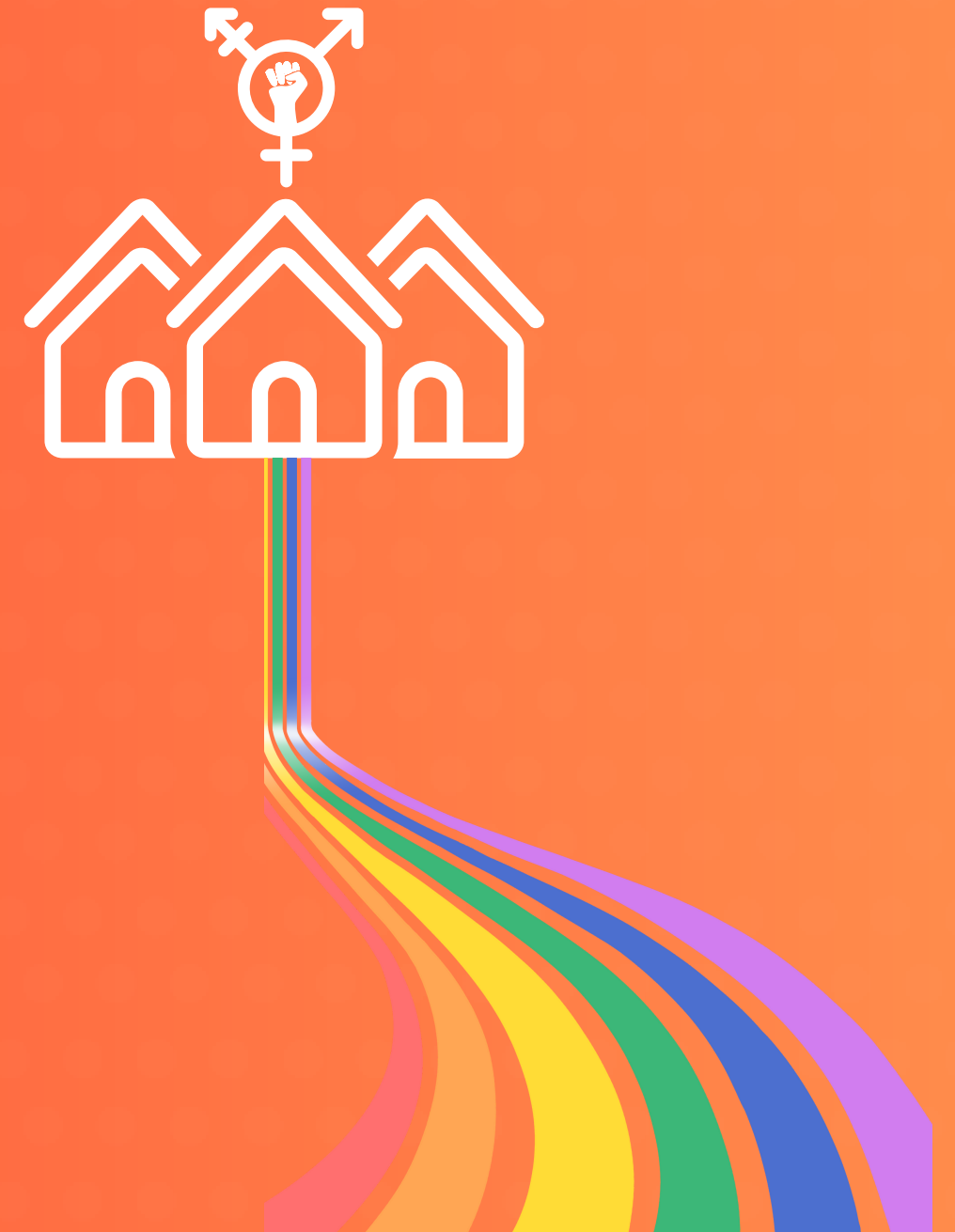
# EMERGENCY SHELTER

- No LGBTQAI2S+ culturally specific emergency shelters in the Portland region.
- Many local emergency shelters are gender-binary (i.e., only accept men or women)



# HOUSING CASE MANAGEMENT

CAP is only LGBTQAI2S+ org funded to provide traditional housing case management, and this service is only available for people living with HIV/AIDS.



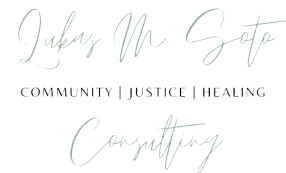


# PERMANENT HOUSING

- CAP is also only queer culturally specific organization funded to provide permanent housing. Eligibility is based on HIV status
- TPI operates the COMPASS PSH program that “prioritizes” transgender folks\*

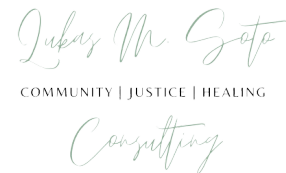
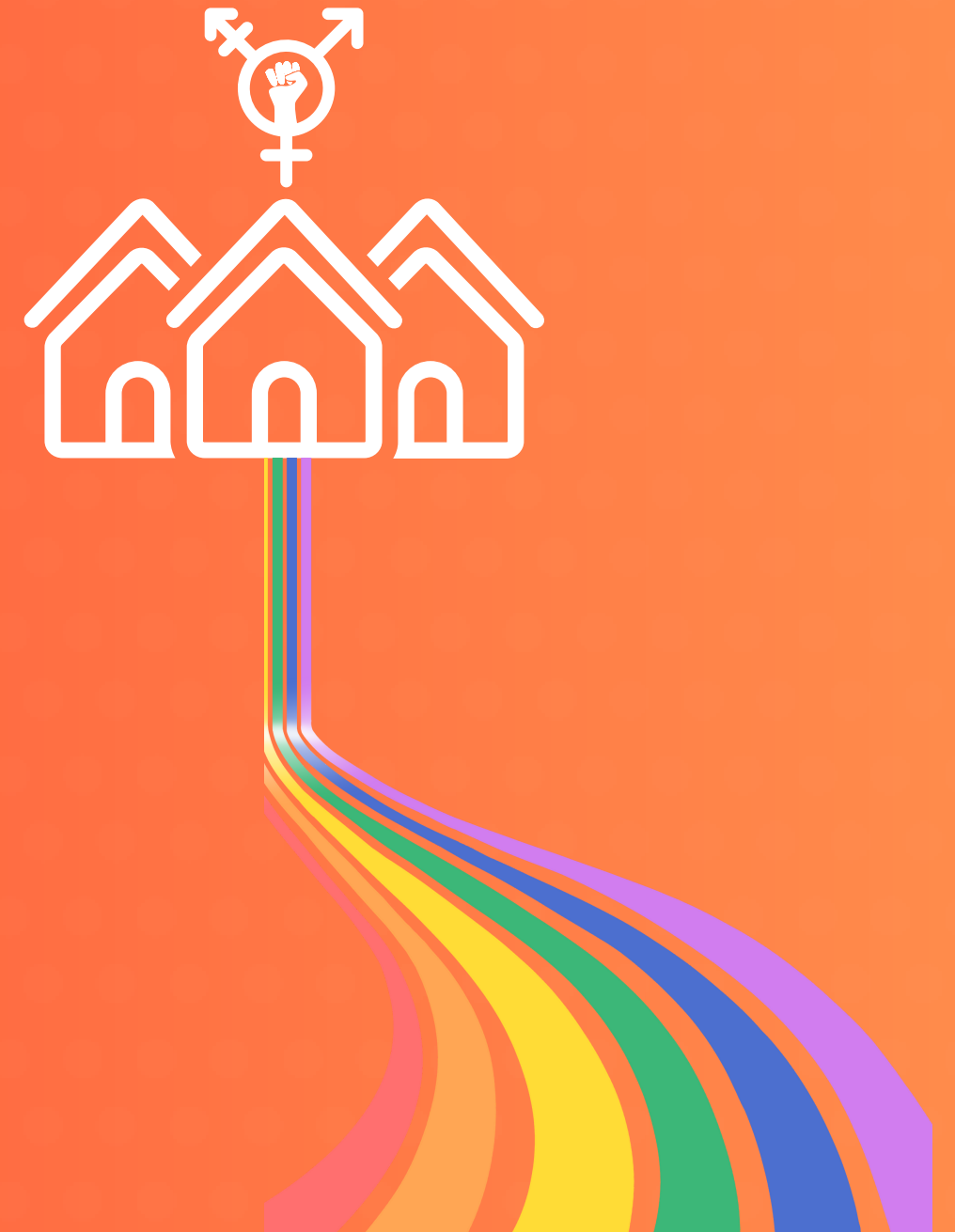


# RECOMMENDATIONS



# LGBTQAI2S+ EQUITY ANALYSIS

Improve transparency and accountability in funding



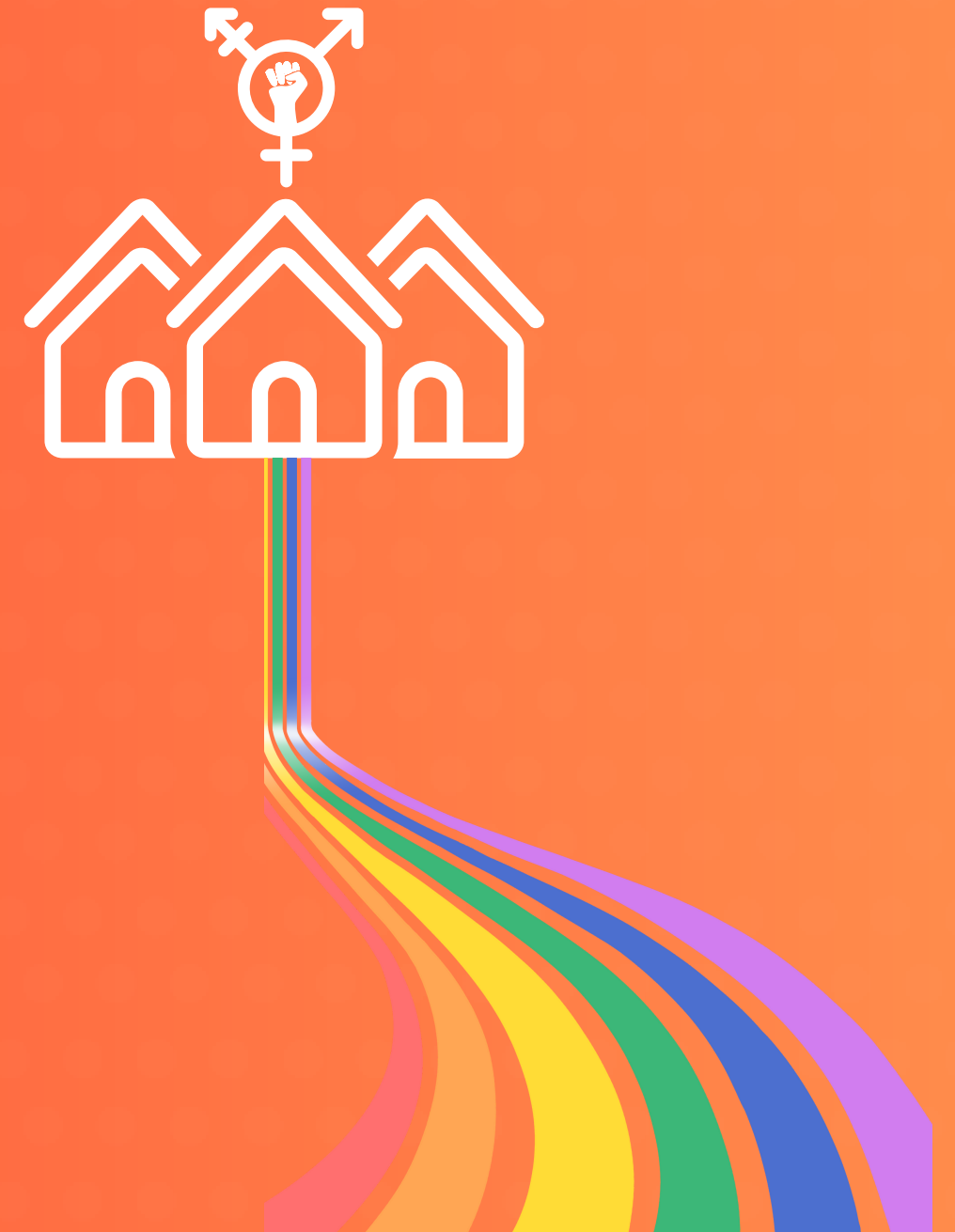
# DATA COLLECTION

- Revise Point-In-Time Count & Homeless Management Information System to collect data on sexual orientation
- Study revising VI-SPDAT to account for LGBTQAI2S+ identity



# CAPACITY BUILDING

Provide financial support and technical assistance in a proactive, low-barrier, collaborative, and consistent manner.





# LGBTQAI2S+ CULTURAL RESPONSIVENESS

- Require non-LGBTQAI2S+ providers to demonstrate cultural responsiveness
- Enforce requirements
- Offer training and technical assistance



# “NON-BINARY” SHELTERS

- Fund LGBTQAI2S+ orgs to operate trans- and queer-specific shelters.
- Current providers to consider what they are doing to create responsive and inclusive spaces for trans and non-binary folks



# WHAT CAN YOU DO AS A PROVIDER?

- Be accountable for providing equitable and intersectional services
- Seek out training and policy development opportunities lead by trans and queer folks



# WHAT CAN YOU DO AS A PROVIDER?

- Ensure databases and intake forms are asking, in a trauma-informed way, about gender and sexual orientation. Leading with transparency when those things have not been included
- Partner with LGBTQAI2S+ specific orgs



# WHY DOES THIS FEEL SO URGENT?

- Tens of thousands of trans and queer folks are fleeing red states for their safety and access to care
- Oregon is 1 of 14 states in the country that provides gender affirming care under state medicaid





- Portland has already been struggling to provide safe and affirming access to shelter and housing for LGBTQAI2S+ community
- We do not have the infrastructure to support existing folks or the influx that is already coming



# DISCUSSION QUESTIONS

- How would your organization needs to change to better serve Trans and Queer folks?
- What would it mean to your community to prioritize this work?
- What does housing security look and feel like?



# Q&A



# FOR MORE INFORMATION

Please email Katie Cox (they/she) at [katie@equi-institute.org](mailto:katie@equi-institute.org)

